

The Right Amount of Water at the Right Time – No More, No Less

ETwater's self-adjusting irrigation control system combines state-of-the-art horticultural science and proprietary web-based technology to automate the scheduling of sprinkler and drip irrigation. Water is applied to landscapes based on current local weather conditions (using both ET and rainfall) and specific landscape factors, including plant type, soil type, slope, sun/shade, sprinkler type, and distribution uniformity.

All irrigation scheduling is done automatically by the ETwater central server that communicates daily with the on-site controller to download a new weather-based irrigation schedule tailored to the user's landscape profile.

This technology reduces irrigation water use by 20%-50% while assuring plant health.

How It Works

1. The customer enters his/her landscape profile online and downloads it to ETwater's server. This step may be performed by landscaper when irrigation system is installed.
2. A weather station in the customer's community constantly measures climate details and rainfall.
3. We access the real-time weather information for the customer's local area and match it with his/her landscape profile to develop the ideal watering schedule.
4. Our server interfaces daily with the customer's on-site ETwater Smart Controller to update the customized watering schedule based on ET and rainfall.
5. The Smart Controller ensures that each zone is watered correctly according to the customer's landscape profile.

The Leader in Web-Powered Irrigation Control

ETwater was the first product to successfully complete the rigorous industry standard Smart Water Application Technology (SWAT) test in November 2004, 15 months before any other smart controller product.

ETwater is the only irrigation product ever to win the coveted Wall Street Journal Tech Award for "Best Environmental Technology Innovation," receiving the award in September 2006.

Please see reverse side for more details on ETwater's system.

Take a fast, informative tour of the system at www.etwater.com.

Features and Benefits

Features

Self-adjusting watering schedule

Web-based setup

Remote monitoring and management via the Web

Automatic e-mail alerts

Proven performance

Automatic rain response

Runoff control

Advanced commercial monitoring and control features

Web-based control of other water-saving technologies

Benefits

- Promotes healthy landscapes
- Eliminates overwatering
- Saves 20-50% on water bills
- No need to reprogram seasonally

- Intuitive and easy to use, with help text on every page
- Eliminates guesswork and manual programming

- Enables desktop control from any PC
- Cuts landscaper labor costs by reducing site visits

- Ensures that problems don't go unnoticed
- Enables user to respond rapidly to problems
- Reports unauthorized on-site adjustments

- Three years success on commercial and residential sites
- Industry standard (SWAT) qualified for rebates

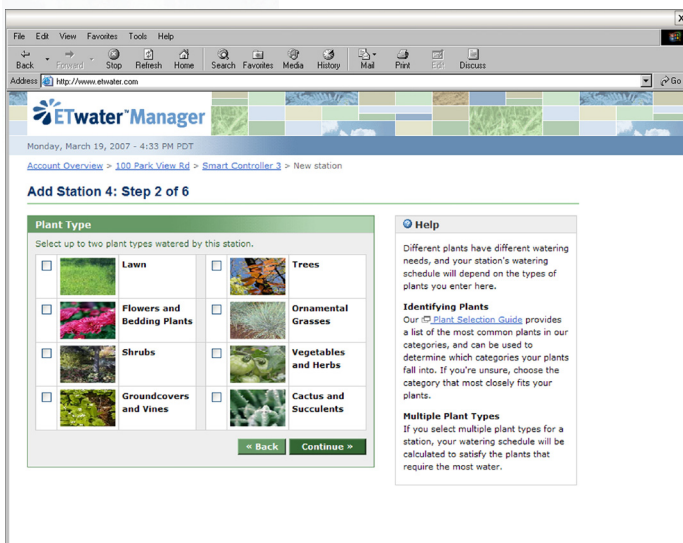
- Uses reported rainfall as well as ET to adjust schedules

- Eliminates wasteful runoff, thus reducing damage to paved surfaces and protecting the environment

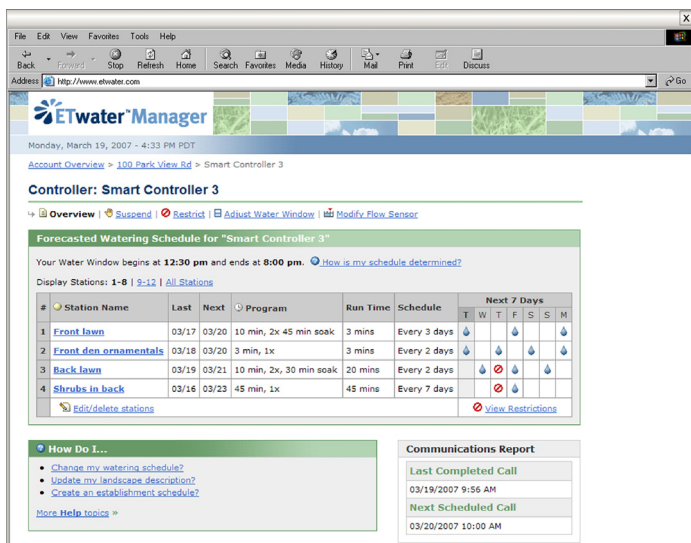
- Flow monitoring and control, with email alerts for high or low flow conditions and automated shut-off for major leaks
- Global setting changes for multiple stations across multiple controllers on one site

- Fertilizer dispensing through the irrigation system (EZ-FLO®)
- High-efficiency, matched precipitation rate sprinklers (MP Rotator®)

ET water offers two systems, a residential model that controls up to 16 stations and a commercial model that controls up to 48 stations.



Overview Screen Displays Entire Watering Schedule



Step Two of the Six-Step Landscape Profile Setup

Take a fast, informative tour of the system at www.etwater.com.